

Being familiar immediately

Please see following introduction and know more details about the jammer.



Main view



No.	Function	Remarks
1	Output Power Port	External Antenna
2	Colling system	Build-in 5 pcs high speed cooling fan
3	Power Supply Port	Connect AC~220V power adapter after installing antenna and other accessories
4	Power Switcher	Turn on or Turn off devices
5	Install panel	Build-in AC to DC Adapter and RF module
6	Install Holder	Use the screw of M10-M15 to install on the wall
7	Lock	Lock for safety management, prevent damage



Specification

Output Port	Frequencies	Average Output Power
CH1	851-960MHz	47.7±1dBm(60W±10W)
CH2	1805-1860MHz	47.4±1dBm(55W±10W)
CH3	2100-2170MHz	47.4±1dBm(55W±10W)
CH4	725-826MHz	47.7±1dBm(60W±10W)
CH5	2400-2500MHz	47.4±1dBm(55W±10W)
(Power Supply):AC110-220V/DC27V Net Weight: 22kgs or so		Energy Consumption: 1000W or so Dimension(L*W*H): 520*230*200mm



Technique characteristics

- ⊙ Taking use of UHF interference technology, support 3G and long-distance warn.
- ⊙ Effective power high, jamming radius is long.
- ⊙ Imported elements: Slow start up design of circuit. These elements can maintain the stable operation condition with high integration.



Start using



Open the package

Carefully open the package, keep all package boxes for later shipment.

Check whether any fitting is good or not, if any damage happened, please contacting with your provider.




Turn on the jammer

- ⊙ After all lines (include in bother connecter lines and power line) have been



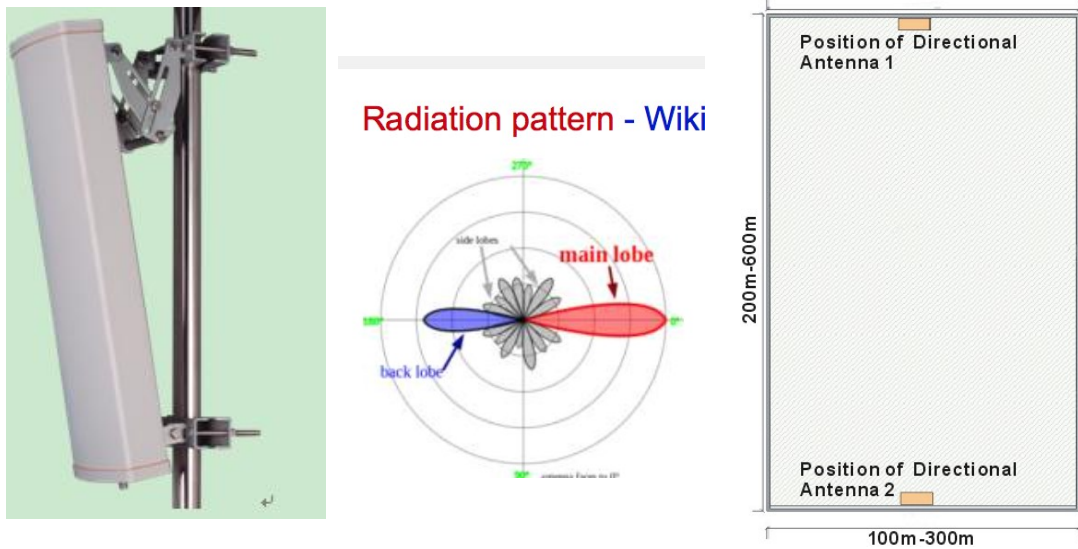
linked, turn on the switcher on the main machine. The pilot lamp will be Green. The output power of jammer is maximal in this situation.

○ Turn off the jammer

- Turn off the switcher  on the main machine, the jammer is out of work.

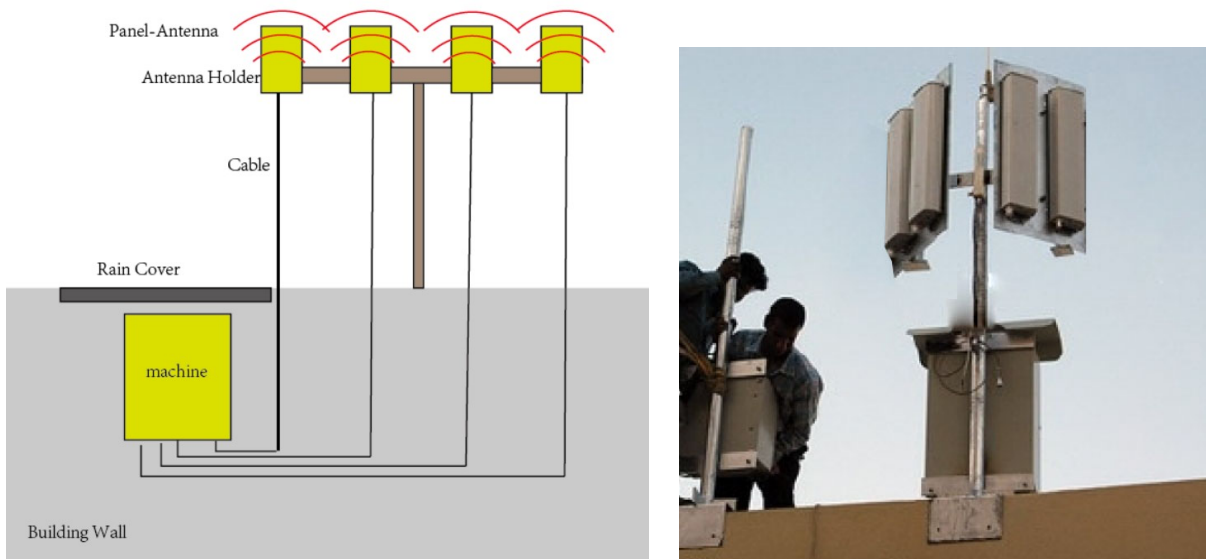
○ Choosing installation position

1、 Use directional antenna the transmit antennae should be put at the edges of shielding area as below shown.



directional ante

The installation diagram:



● **Notices**

- ◎ Be sure to connect all the antennae first before the power supply is switch on. Please do not take off antennae when the machine is working.
- ◎ Antenna shall be used vertical to the ground, working more efficiently.
- ◎ Please don't put the jammer in the water and fire to avoid using in the bad condition of over-wet, over-hot, high voltage and high magnetism.
- ◎ If the jammer can not be charged or other unconventionality(the indicator light doesn't light up), please contact with the distributor in local place. Any refit and incorrect repair is not allowed.
- ◎ Any ruin and disrepair caused by incorrect operation and disassembly will be excluded from the repair with free of charge.